

INNOVA JUNIOR COLLEGE
JC2 MID YEAR EXAMINATIONS
in preparation for General Certificate of Education Advanced Level
Higher 2

GEOGRAPHY

9751/02

Paper 2 Data Response Questions

11th Sept 2017

INSERT

3 hours

READ THESE INSTRUCTIONS FIRST

This Insert contains all the Resources referred to in this questions.

INSERT

This document consists of **11** printed pages and **1** blank page.



Innova Junior College

[Turn over

Resource 1 for Question 1

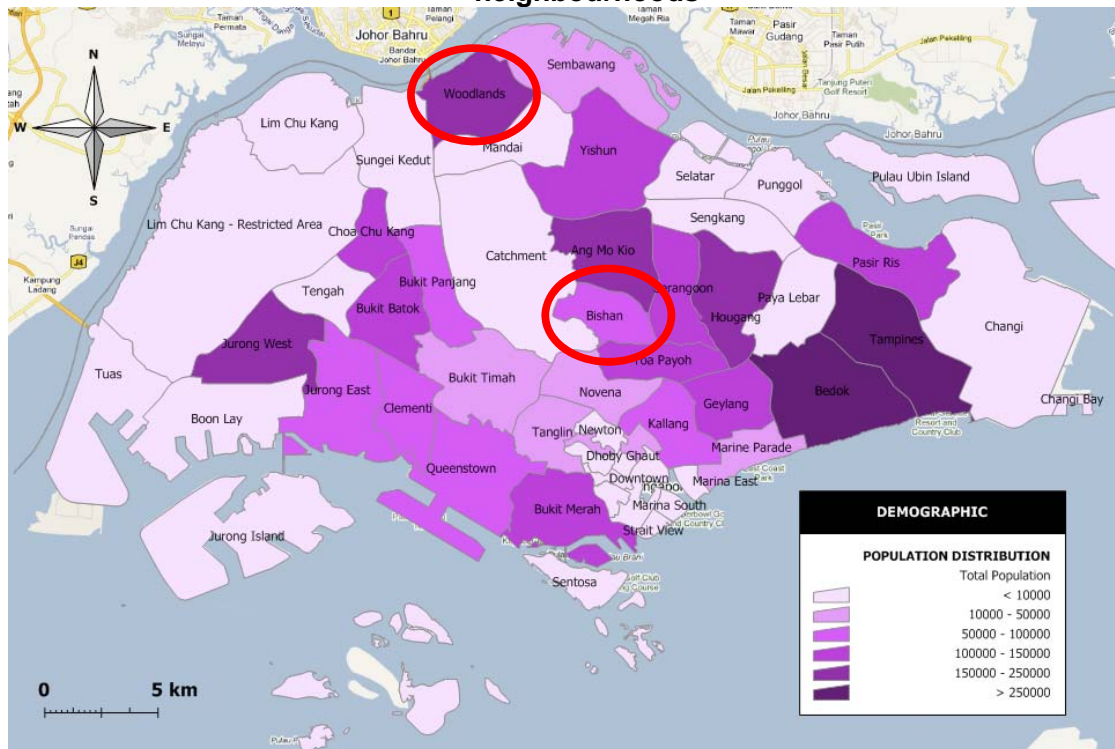
Median rent for Bishan and Woodlands

	3-room	4-room	5-room	Executive
Bishan	\$1900	\$2300	\$2500	*
Woodlands	\$1500	\$1800	\$1900	\$2500

*indicates that the median rent is not shown because there are less than 20 subletting transactions in the quarter for that particular town and flat type.

Resource 2 for Question 1

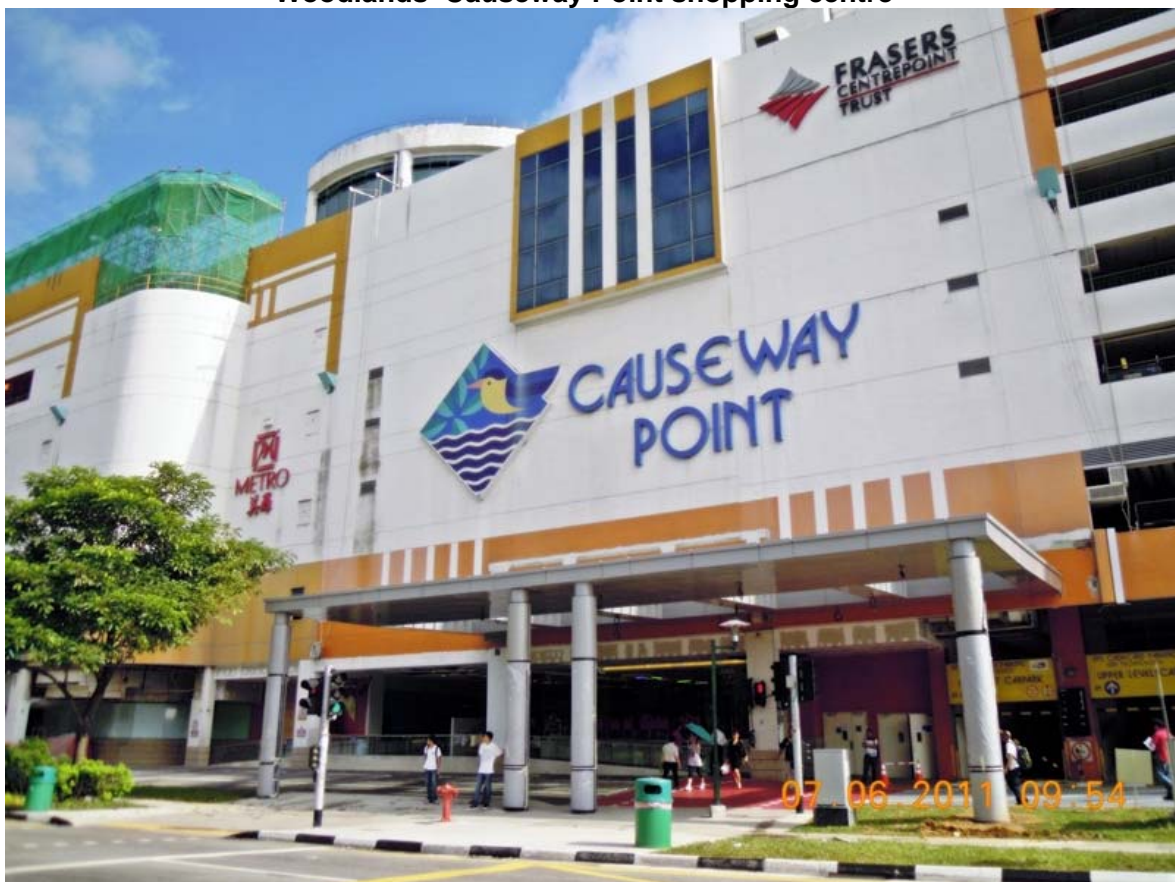
Population density, housing types and amenities in Bishan and Woodlands neighbourhoods



Population density and Housing types

	Population density (people/km ²)	HDB dwellings	Condominium and other apartments	Landed Property
Bishan	11897	75%	13%	12%
Woodlands	18000	95%	4.8%	0.2%

	Amenities
Bishan	Bishan MRT, Bus interchange, Bishan Junction 8 shopping centre, Bishan Community Library, Bishan Stadium, Bishan Swimming Complex, Bishan Sports Hall, Bishan Depot
Woodlands	Woodlands MRT, (temporary) bus interchange, Causeway point shopping centre, Woodlands Civic Centre, Woodlands Square, Vista Point, Triple 8 (888) Plaza

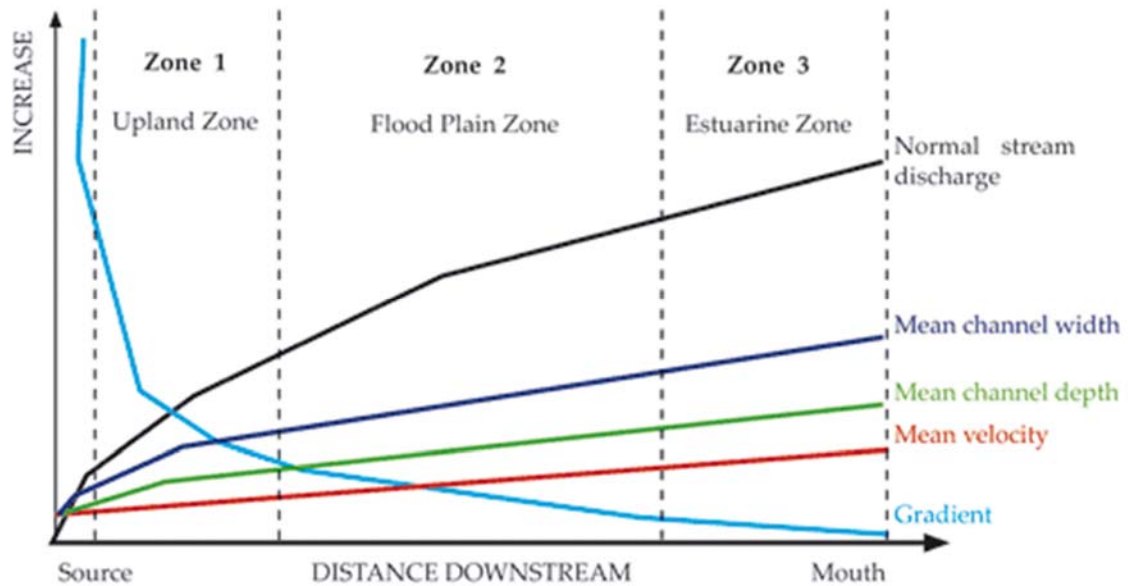
Resource 3 for Question 1**Bishan's Junction 8 shopping centre****Woodlands' Causeway Point shopping centre**

Resource 4 for Question 1
Data collated on the level of satisfaction with the public transport of two
neighbourhoods

	Total number	Excellent	Good	Satisfactory	Poor	Very poor
Bishan	200	88	54	52	3	3
Woodlands	200	56	45	87	6	6

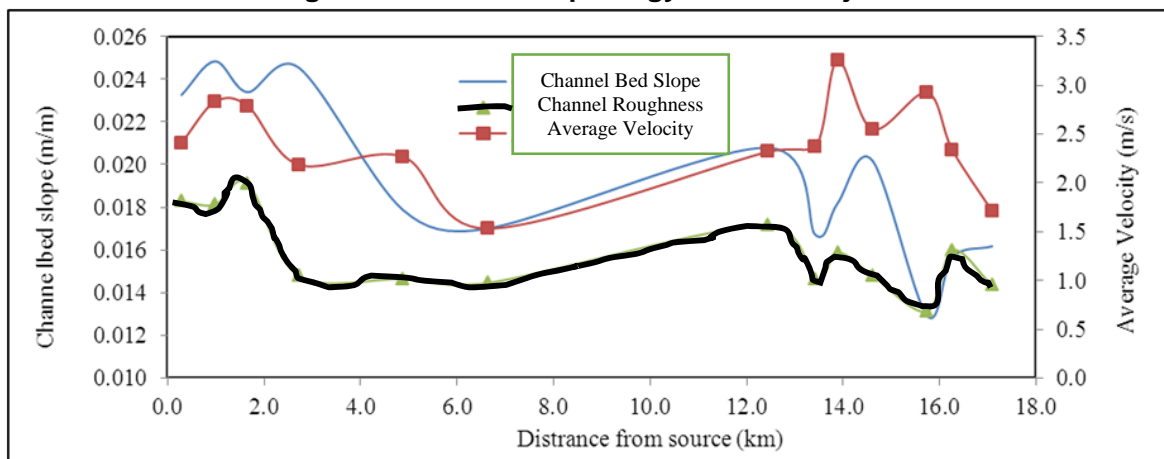
Resource 5 for Question 2

Idealised Model of Channel Variables along the Sutlej River in North India



Resource 6 for Question 2

Changes to Channel Morphology of the Sutlej River



Source: Field survey

Resource 7 for Question 2

Load size in the Sutlej River

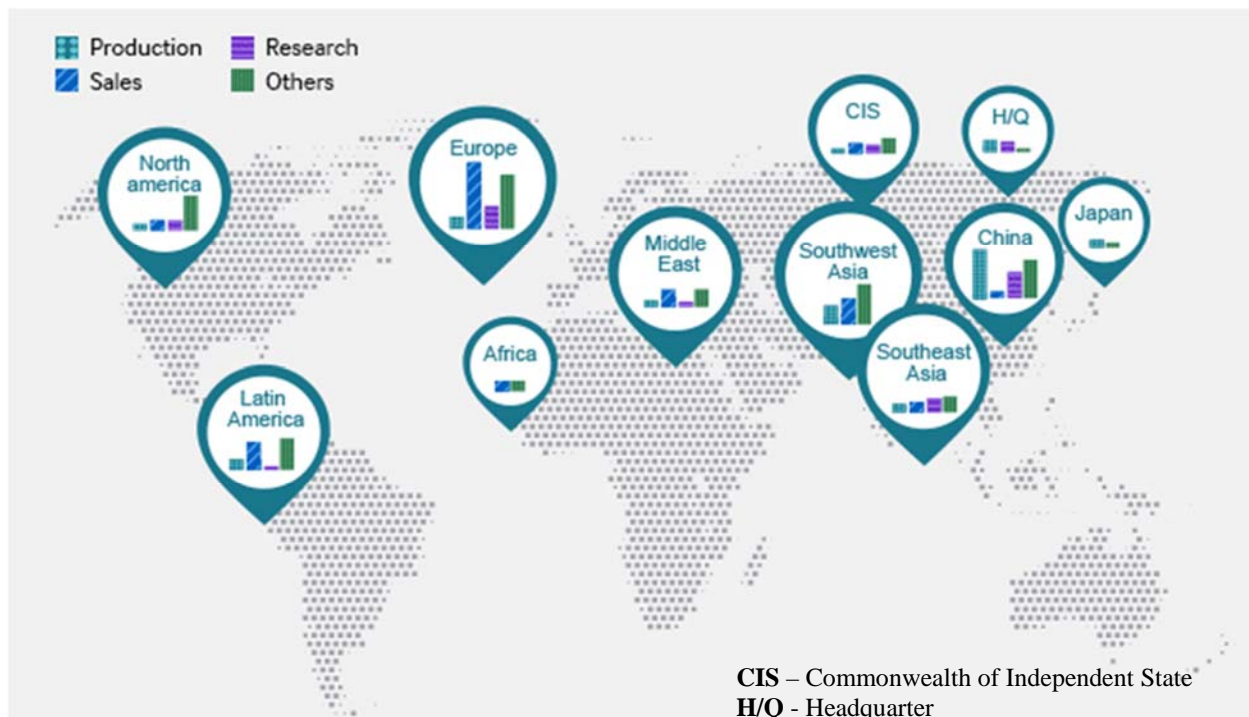
Classification	Particle size (diameter)
Boulder	Above 256 mm
Cobble	64–256 mm
Pebble	4–64 mm
Gravel (or Granule)	2–4 mm
Very coarse sand	1–2 mm
Coarse sand	0.5–1 mm
Medium sand	0.25–0.5 mm
Fine sand	0.125–0.25 mm
Very fine sand	0.062–0.125 mm
Silt	0.004–0.062 mm
Clay	Less than 0.004 mm

Resource 8 for Question 2

Width and Depth measurements of River Sutlej in India.

Sites	Distance from Source	Width(cm)	Depth(cm)
1	0	180	4.5
2	0.03	160	5.3
3	0.05	200	9.5
4	0.57	200	11.8

Resource 9 for Question 3
Samsung's global network.



Resource 10 for Question 3

The global smartphone vendor shipments and market share in 2014 and 2015.

Global Smartphone Vendor Shipments (Millions of Units)	Q4 '14	2014	Q4 '15	2015
Samsung	74.5	317.2	81.3	319.7
Apple	74.5	192.7	74.8	231.5
Huawei	24.1	74.1	32.6	107.1
Lenovo-Motorola	24.7	92.7	20.2	73.9
Xiaomi	17.0	61.1	19.5	72.0
Others	165.3	545.7	176.1	637.5
Total	380.1	1283.5	404.5	1441.7

Global Smartphone Vendor Marketshare (%)	Q4 '14	2014	Q4 '15	2015
Samsung	19.6%	24.7%	20.1%	22.2%
Apple	19.6%	15.0%	18.5%	16.1%
Huawei	6.3%	5.8%	8.1%	7.4%
Lenovo-Motorola	6.5%	7.2%	5.0%	5.1%
Xiaomi	4.5%	4.8%	4.8%	5.0%
Others	43.5%	42.5%	43.5%	44.2%
Total	100.0%	100.0%	100.0%	100.0%

Total Growth: Year-over-Year (%)	31.0%	29.6%	6.4%	12.3%
----------------------------------	-------	-------	------	-------

Resource 11 for Question 3

Samsung's plan after the discontinuation of Galaxy Note 7

ENVIRONMENTAL DISASTER

A Samsung spokesperson told Motherboard they will not fix, refurbish or resell the devices, but has 'a process in place to safely dispose of the phones'.

However, experts warn that we have yet to devise a proper method for disposing of the devices.

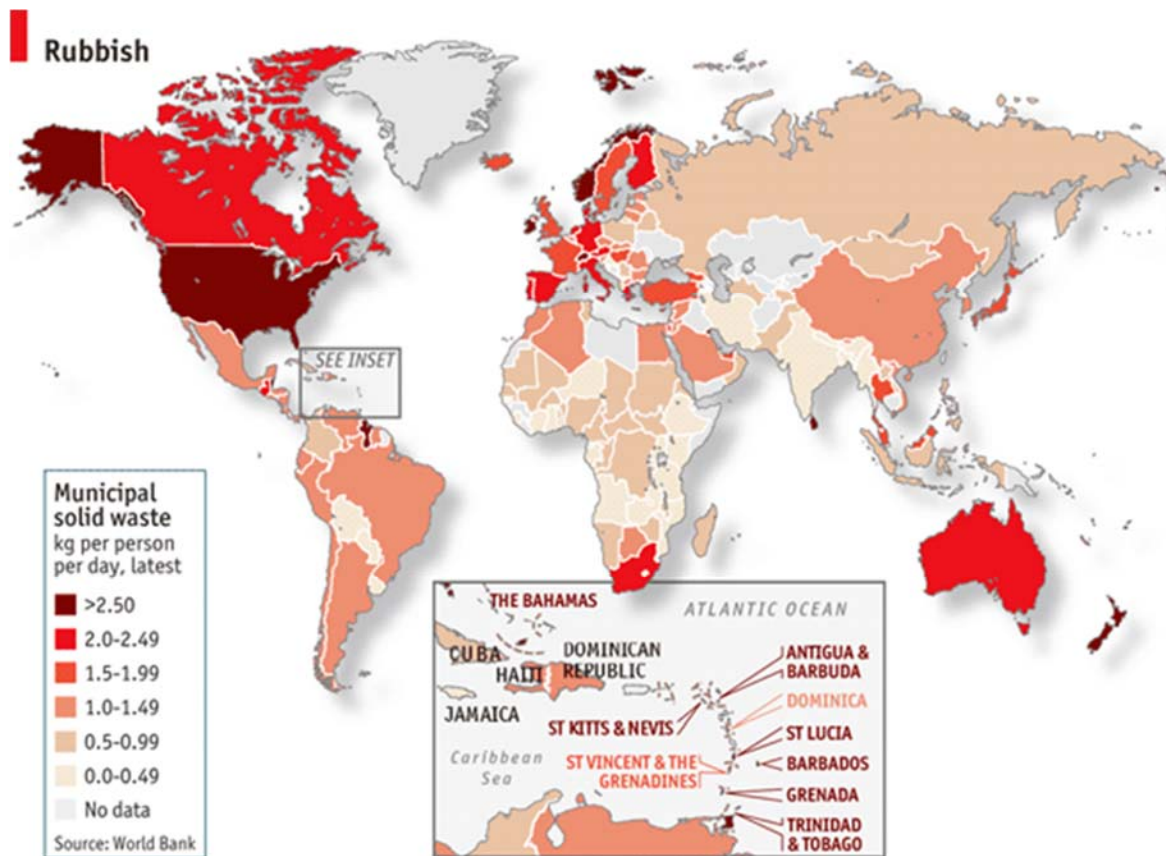
Dumping them in landfills contaminates water supplies and the soil.

Although many believe recycling is the way to go, all of the raw materials cannot be recovered.

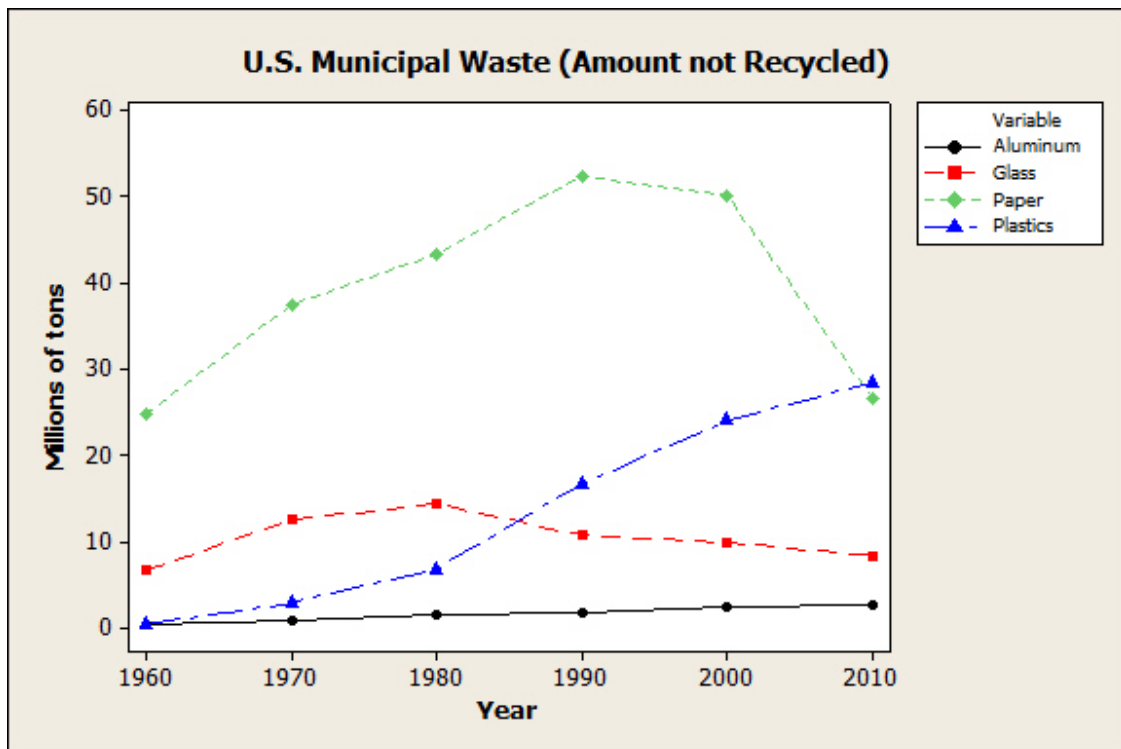
Experts suggest the best method we have is to fix and refurbish, which many firms choose as they can continue to make money with the same device.

Resource 12 for Question 4

Global distribution of Municipal solid waste



Resource 13 for Question 4



Resource 14 for Question 4

Photograph of Smokey Mountain, Tondo in The Philippines



BLANK PAGE